



**WI-PS109-24V**  
**9-Port 24V 100Mbps**  
**PoE Switch**  
**with 8-Port PoE Datasheet**



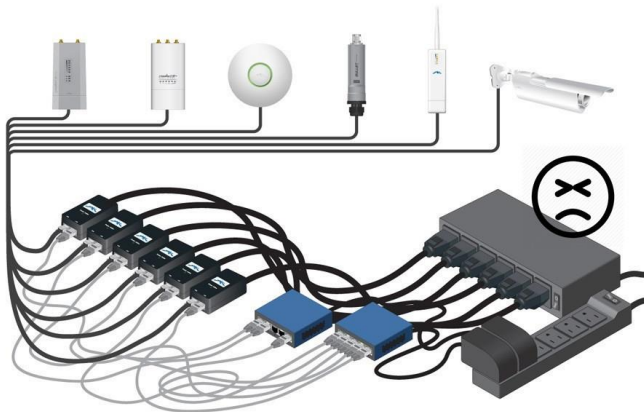
[www.wireless-tek.com](http://www.wireless-tek.com)

## Highlights

- 9 100Mbps Ports with 8 PoE
- Supports PoE power up to 24W for each port
- Supports 24V Passive PoE compliant PDs
- External power adapter supply 120W
- LED indicators for LINK/ACT, Power, PoE Status, 100Mbps
- 2K entry MAC address table with auto-learning and auto-aging



## Typical Applications



**WI-TEK 24V Passive PoE Switch**



## Description

### what this product does

WI-PS109-24V is a 9-port 10/100Mbps unmanaged switch that requires no configuration and provides 8 PoE ports. The switch provides an easy way to expand your wired network. All 9 ports support auto-MDI/MDIX, eliminating the need to worry about the type of cable to use. Featuring full duplex mode, the WI-PS109-24V can process data at a rate of up to 200Mbps making it an ideal choice for expanding your high performance wired network. Moreover, with innovative energy-efficient technology, the WI-PS109-24V can save up to 68% of power consumption, making it an eco-friendly solution for your home or office network.

### High Performance

WI-PS109-24V Fast Ethernet Switch provides 9 10/100Mbps Auto-Negotiation RJ45 ports. All ports support Auto MDI/MDIX function, eliminating the need for crossover cables or Uplink ports. Featuring non-blocking switching architecture, WI-PS109-24V forwards and filters packets at full wire-speed for maximum throughput. And IEEE 802.3x flow control for Full Duplex mode and backpressure for Half Duplex mode alleviate the traffic congestion and make WI-PS109-24V work reliably.

### Easy to Use

The auto features of this ethernet switch make installation plug and play and hassle-free. No configuring is required. Auto MDI/MDIX eliminates the need for crossover cables. Auto-negotiation on each port senses the link speed of a network device (10, 100 Mbps) and intelligently adjusts for compatibility and optimal performance.

## Specifications

## HARDWARE FEATURES

<b>Interface</b>	9 10/100Mbps RJ45 Ports
<b>Network Media</b>	10/100BASE-TX: UTP category 5 or better (maximum 100m)
<b>Fan Quantity</b>	Fanless
<b>Power Consumption</b>	120W (max. with PoE device connected)
<b>External Power Supply</b>	External Power Adapter(Output: AC24V 5A)
<b>PoE Ports (RJ45)</b>	PoE PIN: 4,5+ 7,8- PoE Ports: Port1- Port8 Power Supply: 120W
<b>Backbound Bandwidth</b>	1.6Gbps
<b>Mac Address Table</b>	2K
<b>Dimensions</b>	197*75*30 mm(L*W*H)

## SOFTWARE FEATURES

<b>Transmission Method</b>	Store-And-Forward
<b>Advanced Functions</b>	Priority Function Mac Address Auto-Learning And Auto-Aging

## SOFTWARE FEATURES

	Store and forward IEEE 802.3x flow control for Full-duplex Mode Backpressure for Half-duplex Mode
<b>OTHERS</b>	
<b>Certification</b>	CE, FCC, RoHS
<b>Package Contents</b>	POE Switch Electric Line Guide Book/Warranty Card
<b>Environment</b>	Operating Temperature: -10°C~55°C